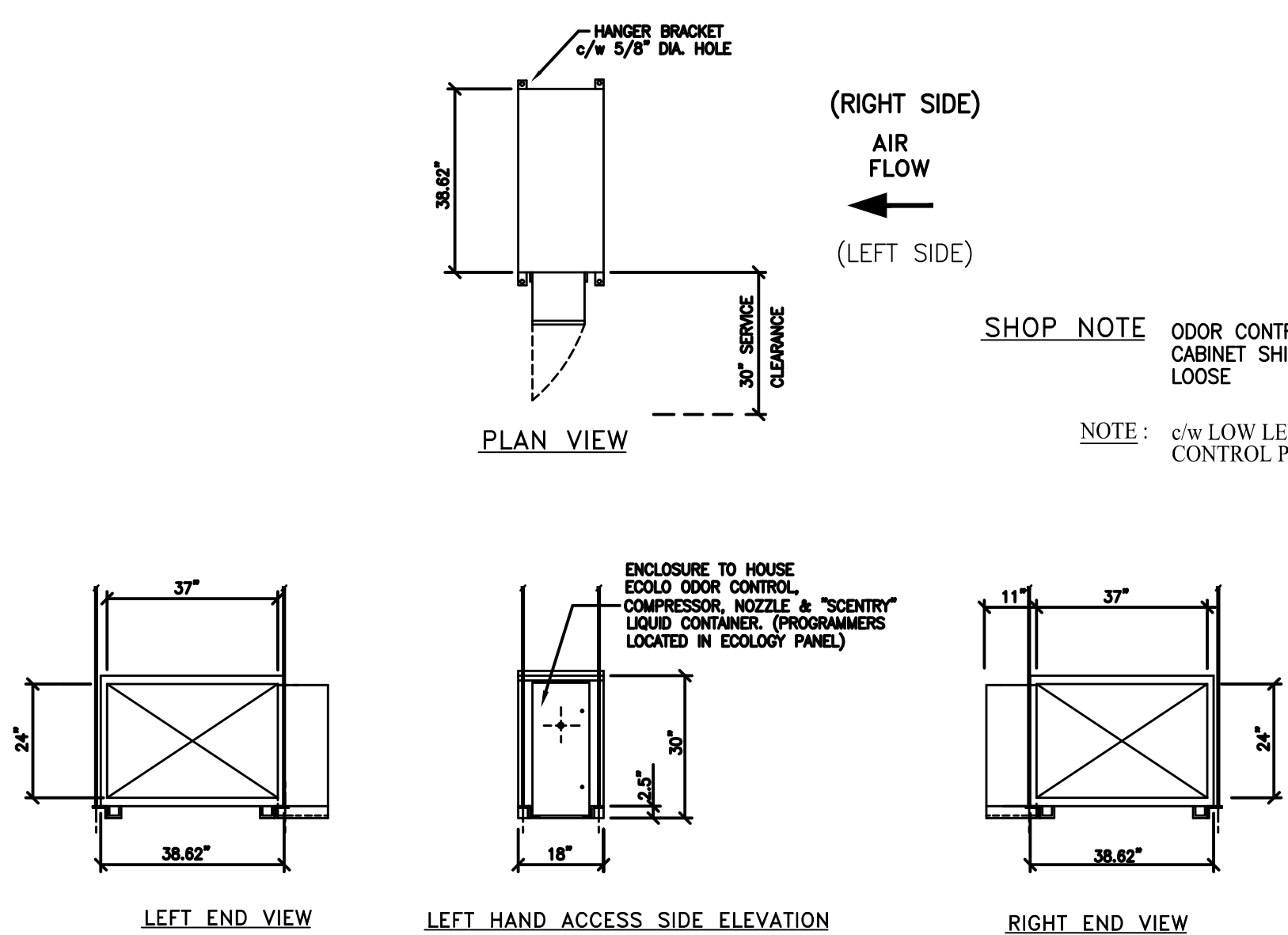
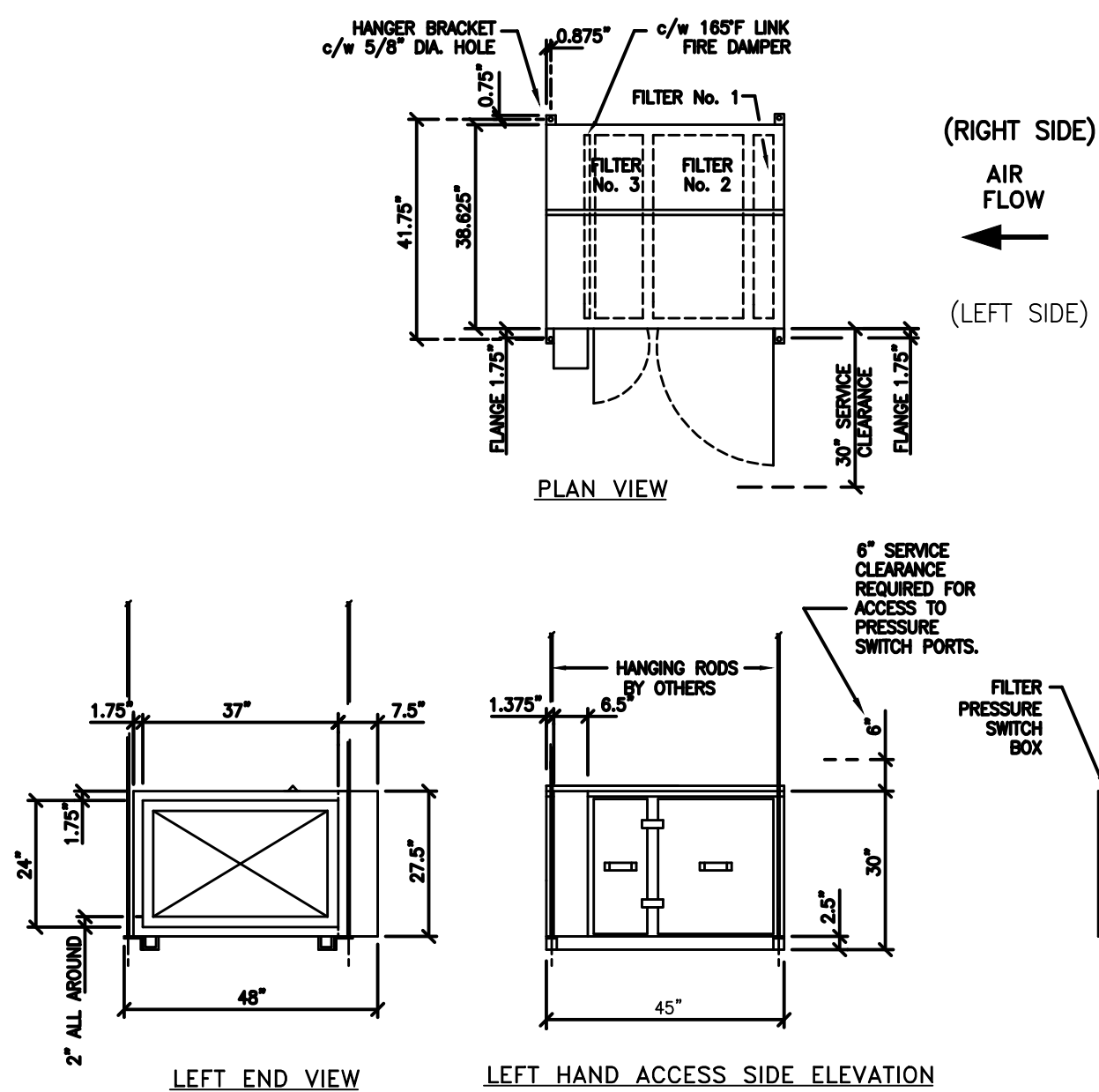


ODOR SECTION FOR ECOLOGY UNIT: CAS3000 (EF3-45-OC3-B3)  
 ECOLO ODOR CONTROL MODULE WEIGHT: 280 LBS



FILTER SECTION FOR ECOLOGY UNIT: CAS3000 (EF3-45-OC3-B3)

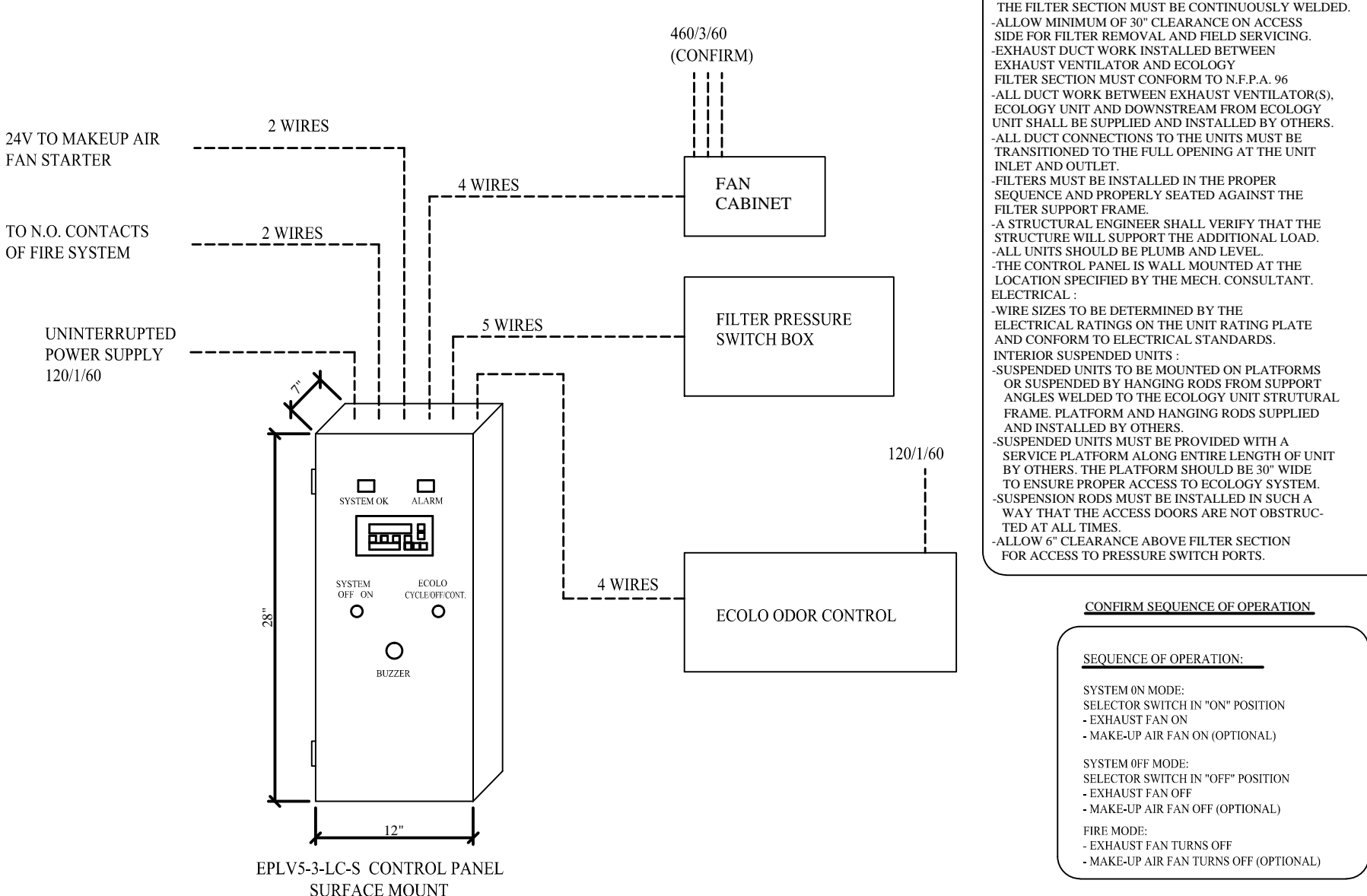


EF3-45 FILTER SECTION			
DATA	IMPERIAL	METRIC	
Max. Exhaust Air	3000 CFM		ls
Design Exhaust Air	2800 CFM		ls
Filter Box Static	1.72" W.G.		kpa
Dirty Filter Factor	0.50" W.G.		kpa
Total Internal Static	2.22" W.G.		kpa
Mounting	INTERIOR / CEILING		
Weight	398 lbs.		kg.

ECOLO FILTER DATA - AT FULL LOAD CAPACITY

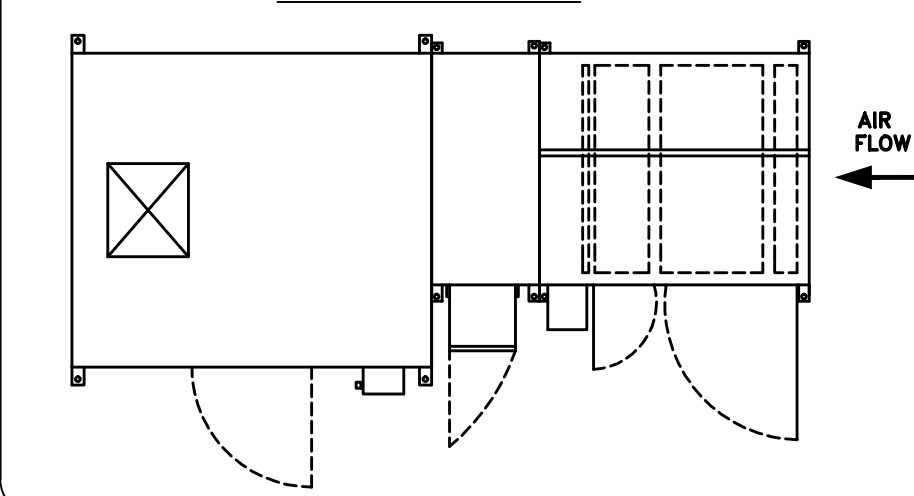
FILTER No.	TYPE	SIZE	CAPACITY	QTY.	SP. (FS.WG.)
1	40% Pre-Filter	24"x12"x2"	1000 CFM	1	0.15"
2	95% Med-Filter	24"x24"x2"	2000 CFM	1	1.00"
3	99% Absol-Filter	24"x12"x15"	1000 CFM	1	1.00"
		24"x24"x12"	2000 CFM	1	1.00"

CONTROL PANEL FOR ECOLOGY UNIT: CAS3000 (EF3-45-OC3-B3)

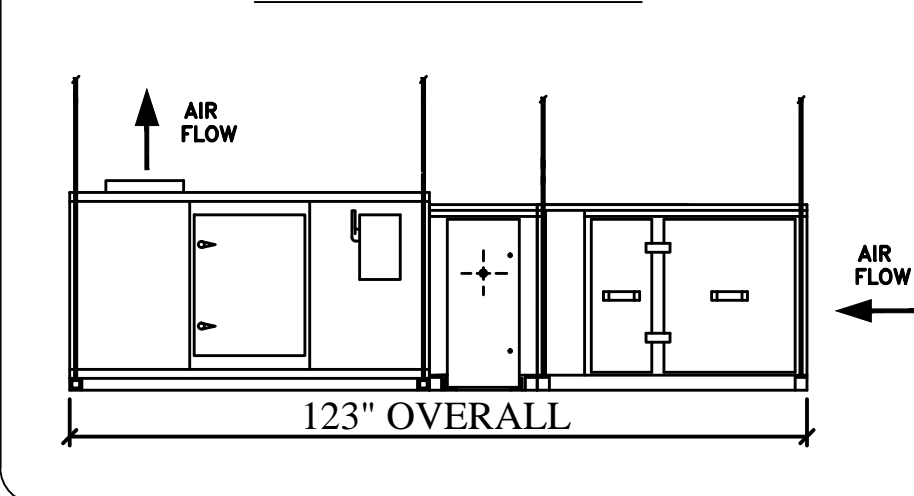


**SPECIAL NOTES TO MECHANICAL TRADES**  
 GENERAL:  
 CABINETS ARE OF WELDED STEEL CONSTRUCTION, PRIME AND PAINTED.  
 ECOLOGY UNIT IS U.L. & U.L.C. LISTED.  
 INSTALLATION:  
 - THE EXHAUST DUCT CONNECTION AT THE ENTRANCE TO THE FILTER SECTION MUST BE CONTINUOUSLY WELDED. ALLOW MINIMUM OF 30" CLEARANCE ON ACCESS SIDE FOR FILTER REMOVAL AND FIELD SERVICING.  
 - EXHAUST DUCT WORK INSTALLED BETWEEN EXHAUST VENTILATOR AND ECOLOGY FILTER SECTION MUST CONFORM TO D.F.A. #6.  
 - ALL DUCT WORK BETWEEN EXHAUST VENTILATORS, ECOLOGY UNIT AND DOWNSTREAM FROM ECOLOGY UNIT SHALL BE SUPPLIED AND INSTALLED BY OTHERS.  
 - ALL DUCT CONNECTIONS TO THE UNITS MUST BE TRANSITIONED TO THE FULL OPENING AT THE UNIT INLET AND OUTLET.  
 - FILTERS MUST BE INSTALLED IN THE PROPER SEQUENCE AND PROPERLY SEATED AGAINST THE FILTER SUPPORT FRAME.  
 - A STRUCTURAL ENGINEER SHALL VERIFY THAT THE STRUCTURE WILL SUPPORT THE ADDITIONAL LOAD. ALL UNITS SHOULD BE PLUMB AND LEVEL.  
 - THE CONTROL PANEL IS WALL MOUNTED AT THE LOCATION SPECIFIED BY THE MECH. CONSULTANT. ELECTRICAL:  
 - WIRE SIZES TO BE DETERMINED BY THE ELECTRICAL RATINGS ON THE UNIT RATING PLATE AND CONFORM TO ELECTRICAL STANDARDS.  
 - INTERIOR SUSPENDED UNITS:  
 - SUSPENDED UNITS TO BE MOUNTED ON PLATFORMS OR SUSPENDED BY HANGING RODS FROM SUPPORT ANGLES WELDED TO THE ECOLOGY UNIT STRUCTURAL FRAME. PLATFORM AND HANGING RODS SUPPLIED AND INSTALLED BY OTHERS.  
 - SUSPENDED UNITS MUST BE PROVIDED WITH A SERVICE PLATFORM ALONG ENTIRE LENGTH OF UNIT BY OTHERS. THE PLATFORM SHOULD BE 30" WIDE TO ENSURE PROPER ACCESS TO ECOLOGY SYSTEM. SUSPENSION RODS MUST BE INSTALLED IN SUCH A WAY THAT THE ACCESS DOORS ARE NOT OBSTRUCTED AT ALL TIMES.  
 - ALLOW 6" CLEARANCE ABOVE FILTER SECTION FOR ACCESS TO PRESSURE SWITCH PORTS.  
 CONFIRM SEQUENCE OF OPERATION.

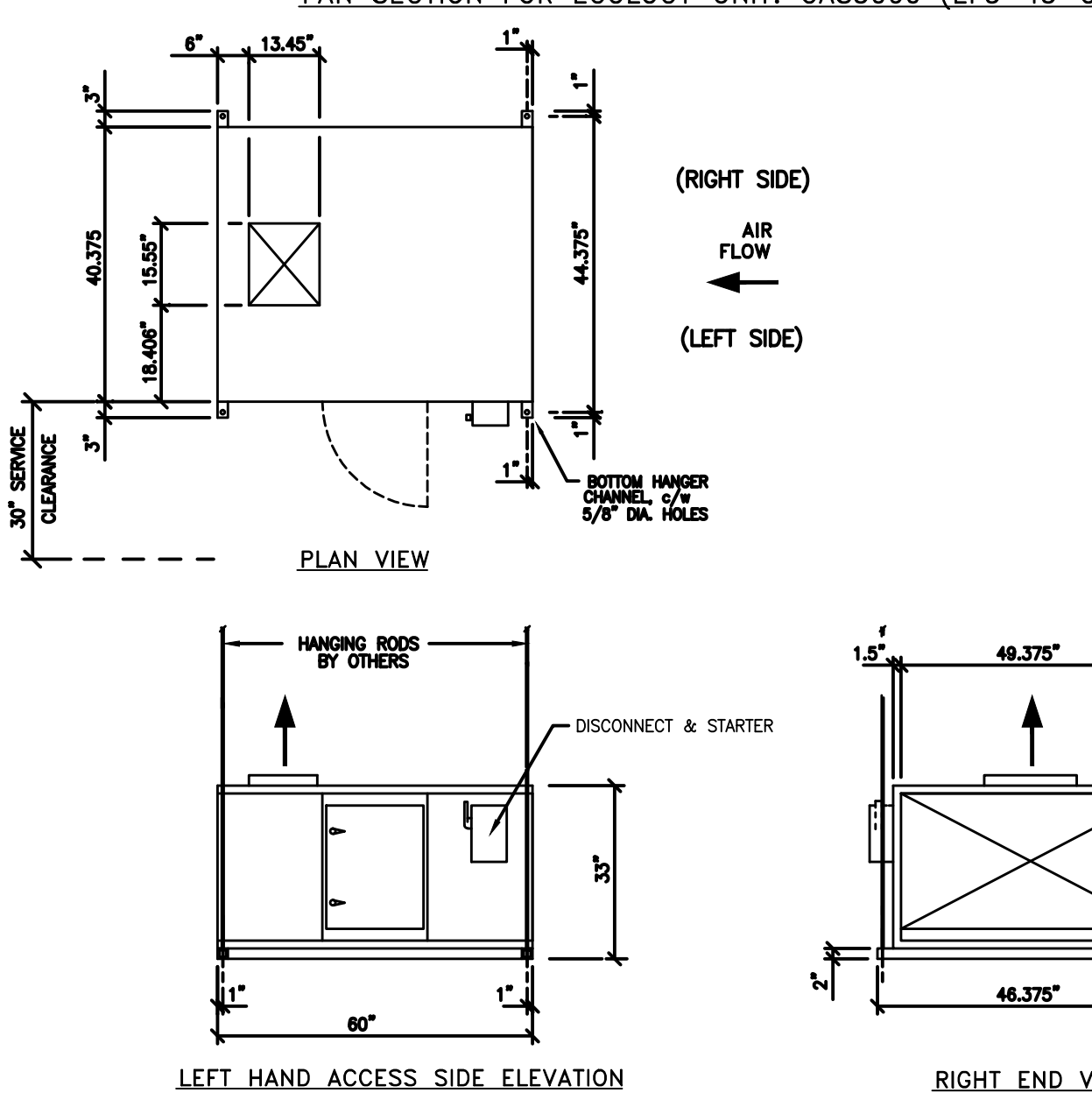
PLAN VIEW ASSEMBLY



LEFT HAND VIEW ASSEMBLY



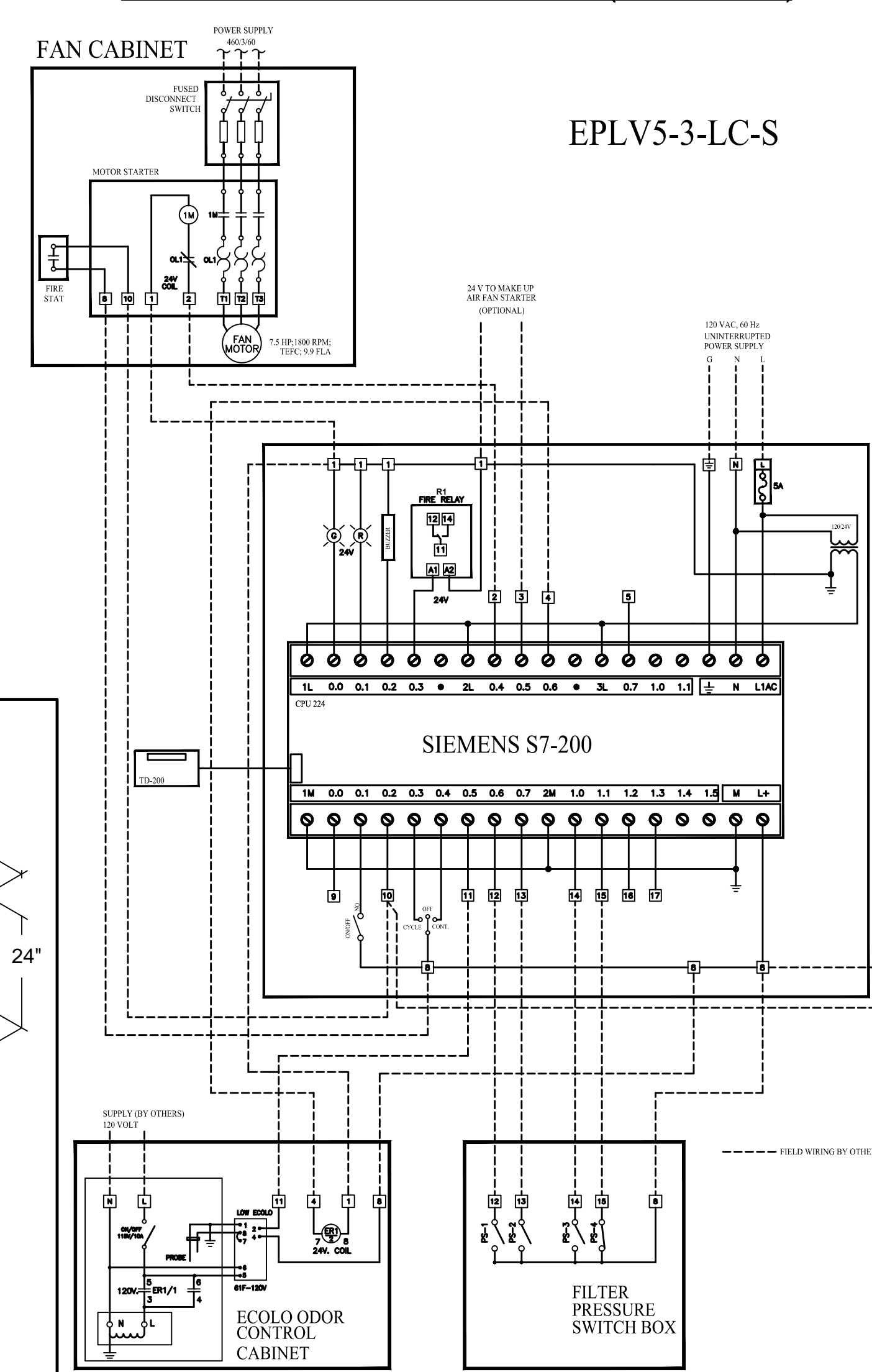
FAN SECTION FOR ECOLOGY UNIT: CAS3000 (EF3-45-OC3-B3)



B3 FAN SECTION			
DATA	IMPERIAL	METRIC	
Max. Exhaust Air	3000 CFM		ls
Design Exhaust Air	2800 CFM		ls
Total Internal S.P.	2.22" W.G.		kpa
Hood Static	ADVISE W.G.		kpa
+ Duct Loss	ADVISE W.G.		kpa
- Total External S.P.	2.75" W.G.		kpa
Total System S.P. (required for hood system balance)	4.97" W.G.		kpa
Motor	7.5 hp		kw
Power	3.72 bhp		kw
Full Load AMPS	9.9		
Motor RPM	1800		
Voltage	460		
Phase	3		
Fan RPM	2895		
Mounting	INTERIOR-CEILING		
Weight	950 lbs.		kg.

NOTE: CONFIRM LEFT HAND ACCESS  
 NOTE: CONFIRM DATA CHART

WIRING DIAGRAM FOR ECOLOGY UNIT: CAS3000 (EF3-45-OC3-B3)



**UL NSF NFPA**  
**(6) - REQUIRED**  
 (1) AP-2 / (1) AP-3 / (1) AP-4  
 (1) AP-5 / (1) AP-6 / (1) AP-8

REVISIONS			
REV	DATE	BY	REMARKS
A	4-26-06	SWL	(6) REQUIRED AND CHANGED C.F.M. AND S.P.
B	5-2-06	SWL	UPDATED CAS-KEF 3000 DETAIL
C	5-11-06	SWL	UPDATED CAS-KEF 3000 DETAIL

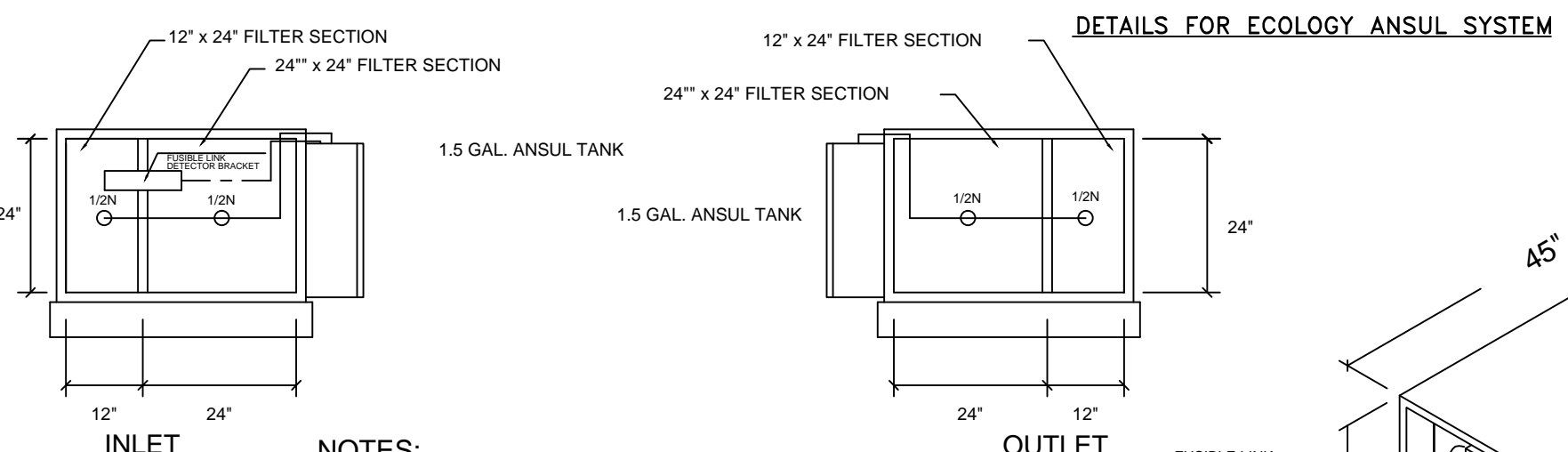
**CADDY AirSystems**  
 509 SHARPTOWN ROAD  
 P.O. BOX 345 BRIDGEPORT NJ 08014  
 Tel:(856) 467-4222 Fax:(856) 467-5511

**EQUIPMENT SCHEDULE**

CAS-KEF-3000

CADDY NO. 3732 ITEM NO. AP-2, AP-3, AP-4, AP-5, AP-6, AP-8

JOB: STANFORD STADIUM  
 LOC:  
 CUST:  
 CUST#:

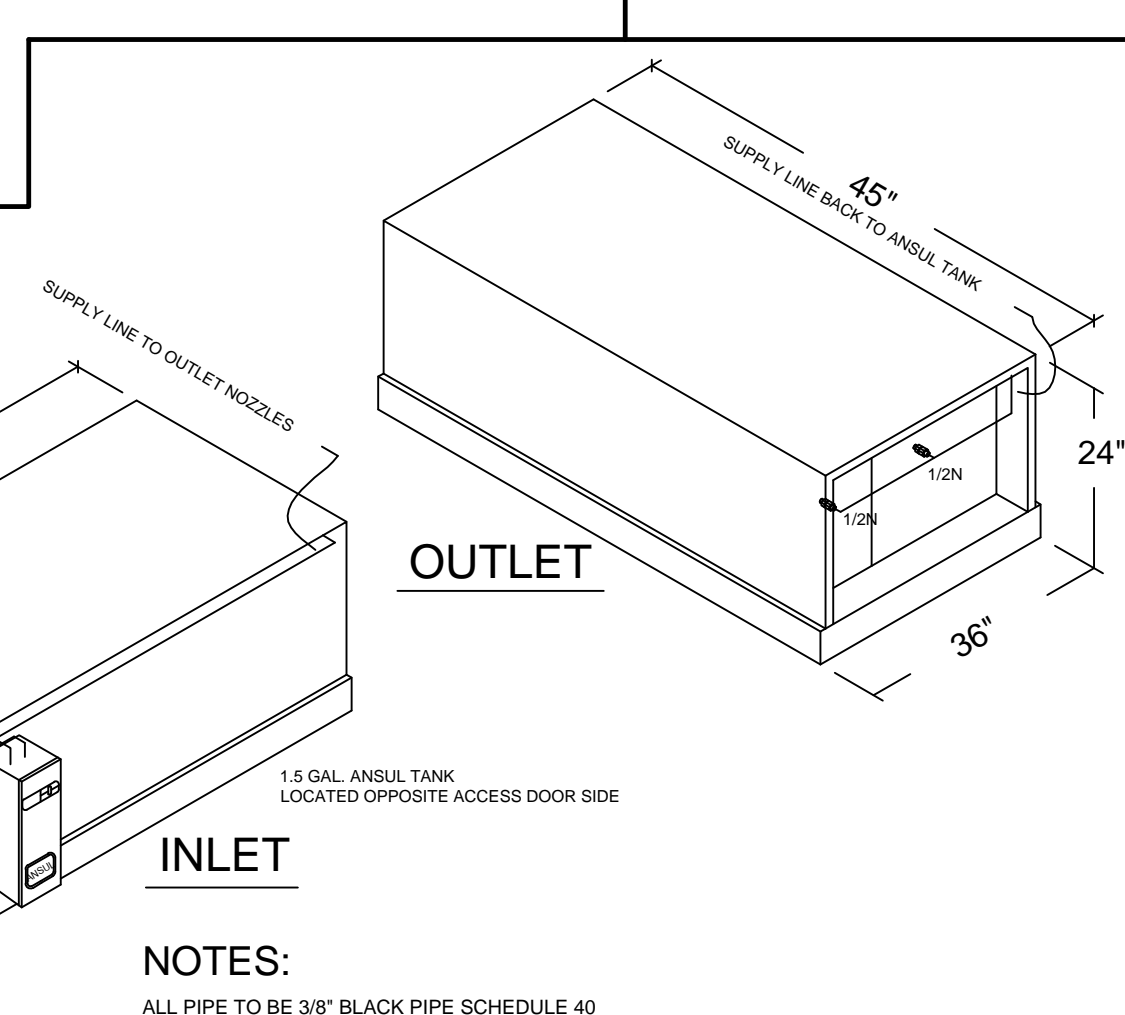


**NOTES:**  
 ALL PIPE TO BE 3/8" BLACK PIPE SCHEDULE 40  
 1/2N NOZZLES ARE TO BE LOCATED IN EACH FILTER SECTION ON BOTH INLET & OUTLET  
 450' FUSIBLE LINK LOCATED IN THE INLET

1.5 GAL. SYSTEM RATING			
1	1.5 gal. ANSUL R-102 cylinder provides max. flow of	6	
2	2N nozzle(s) count of 2 ea		
3	1N, 1N, 1F nozzle(s) count of 1 ea		
4	2N, 2N, 2N nozzle(s) count of 2 ea		
5	1/2N nozzle(s) count of 1/2 ea	2	
6	3N nozzle(s) count of 3 ea		
		Total count	2

ECOLOGY	NUMBER OF NOZZLES
CAS 3000	4

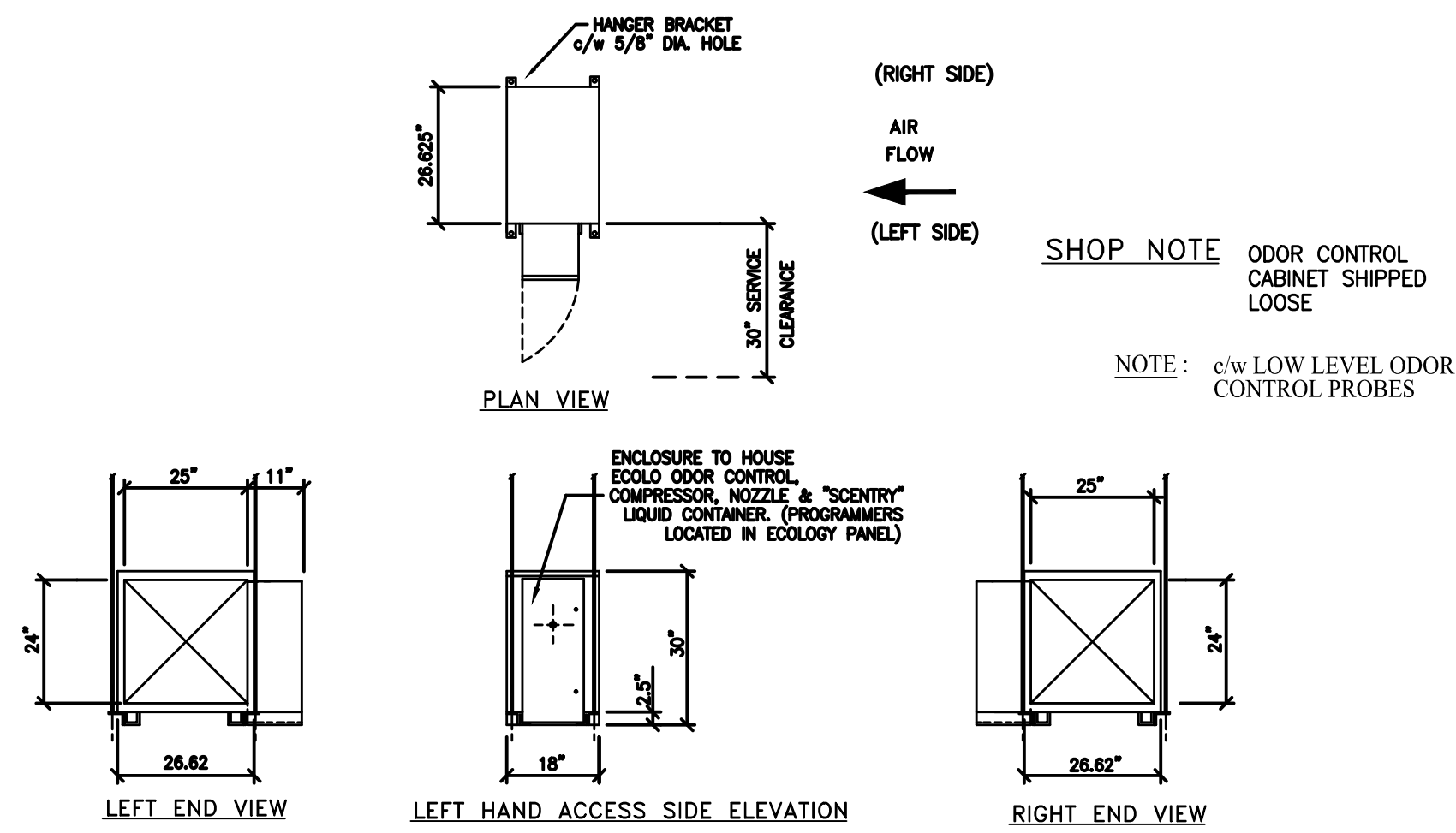
NOTE: ALL DIMENSIONS ARE NOMINAL



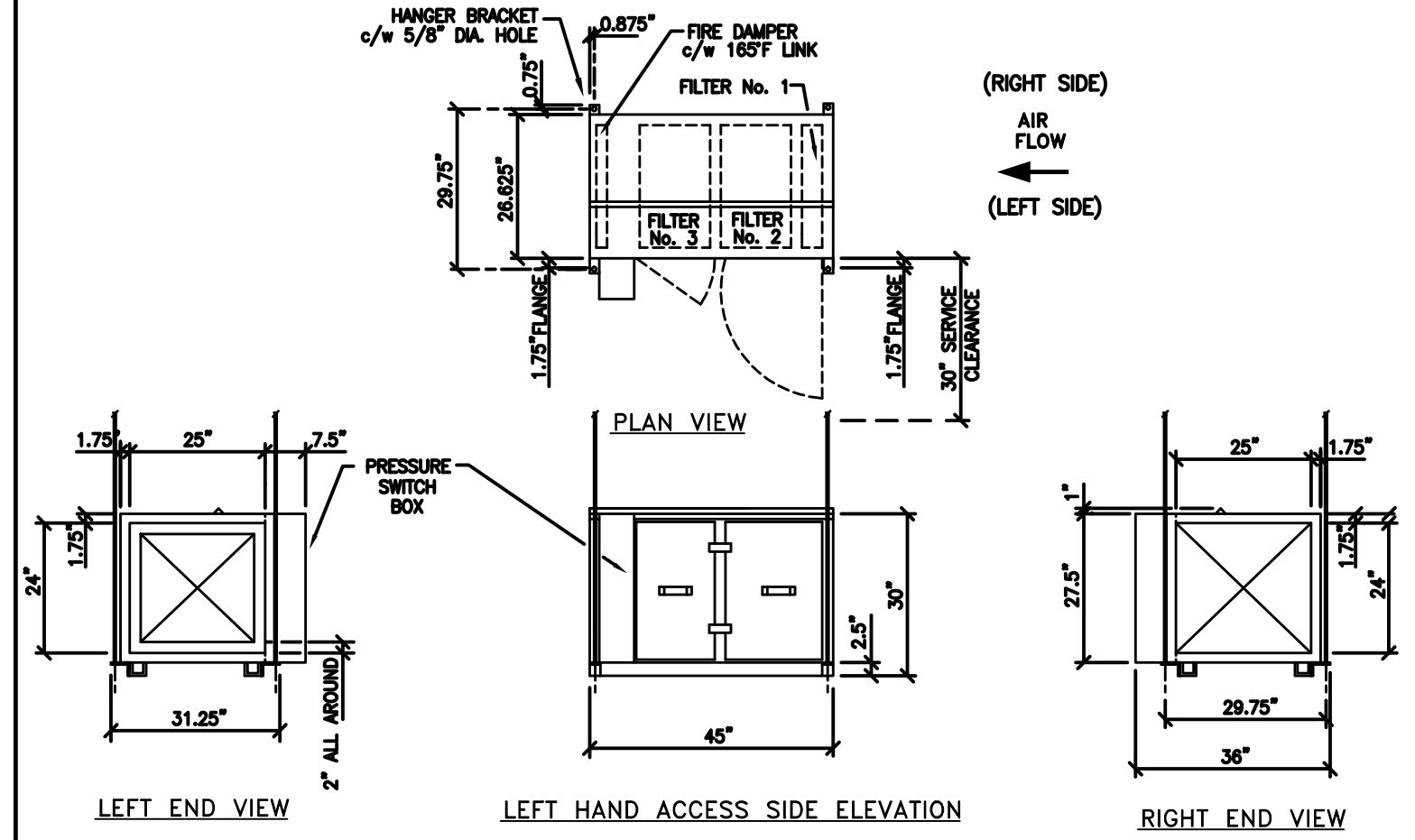
**NOTES:**  
 ALL PIPE TO BE 3/8" BLACK PIPE SCHEDULE 40  
 1/2N NOZZLES ARE TO BE LOCATED IN EACH FILTER SECTION ON BOTH INLET & OUTLET  
 450' FUSIBLE LINK LOCATED IN THE INLET  
 NO MORE THAN 20 PULLEY ELBOWS USED BETWEEN AUTOMAN & FUSIBLE LINK DETECTOR  
 PIPING LIMITATIONS ARE WITHIN THE GUIDELINES MENTIONED IN THE DESIGN MANUAL

ODOR SECTION FOR ECOLOGY UNIT: CAS2000 (EF2-45-OC2-B2)

ECOLO ODOR CONTROL MODULE WEIGHT: 200 LBS



FILTER SECTION FOR ECOLOGY UNIT: CAS2000 (EF2-45-OC2-B2)

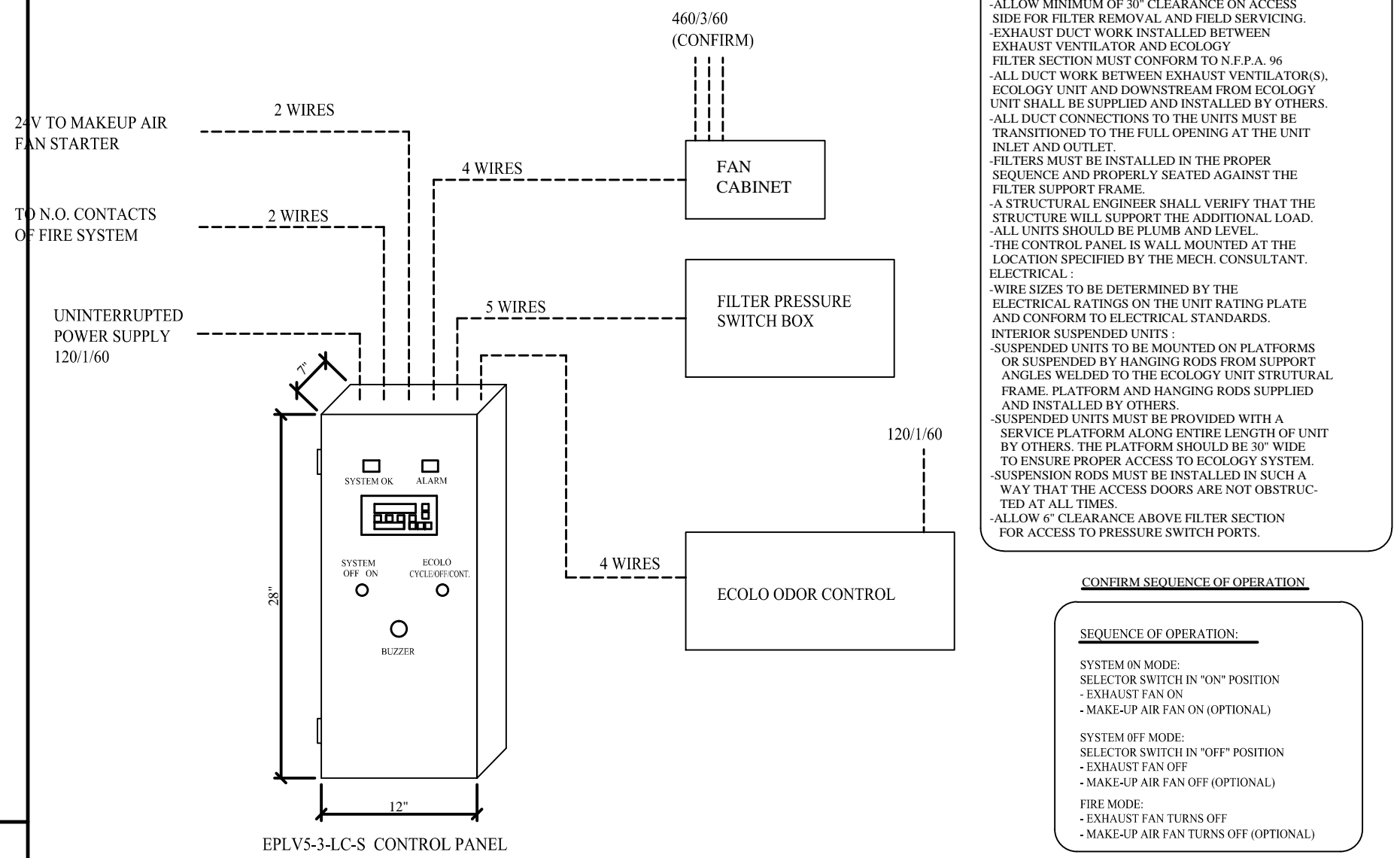


EF2-45 FILTER SECTION			
DATA	IMPERIAL	METRIC	
Max. Exhaust Air	2000 CFM		1s
Design Exhaust Air	1500 CFM		1s
Filter Box Static	1.38" W.G.		kpa
Dirty Filter Factor	0.50" W.G.		kpa
Total Internal Static	1.88" W.G.		kpa
Mounting	INTERIOR / CEILING		
Weight	315 lbs.		kg.

ECOLOGY FILTER DATA - AT FULL LOAD CAPACITY				
FILTER No.	TYPE	SIZE	CAPACITY	QTY.
1	40% Pre-Filter	24"x12"x2"	1000 CFM	0
				0.15" clean
2	95% Med-Filter	24"x24"x2"	2000 CFM	1
				0.70" clean
3	99% Absol-Filter	24"x24"x12"	1000 CFM	1
				1.00" clean

CONTROL PANEL FOR ECOLOGY UNIT: CAS2000 (EF2-45-OC2-B2)



**SPECIAL NOTES TO MECHANICAL TRADES**

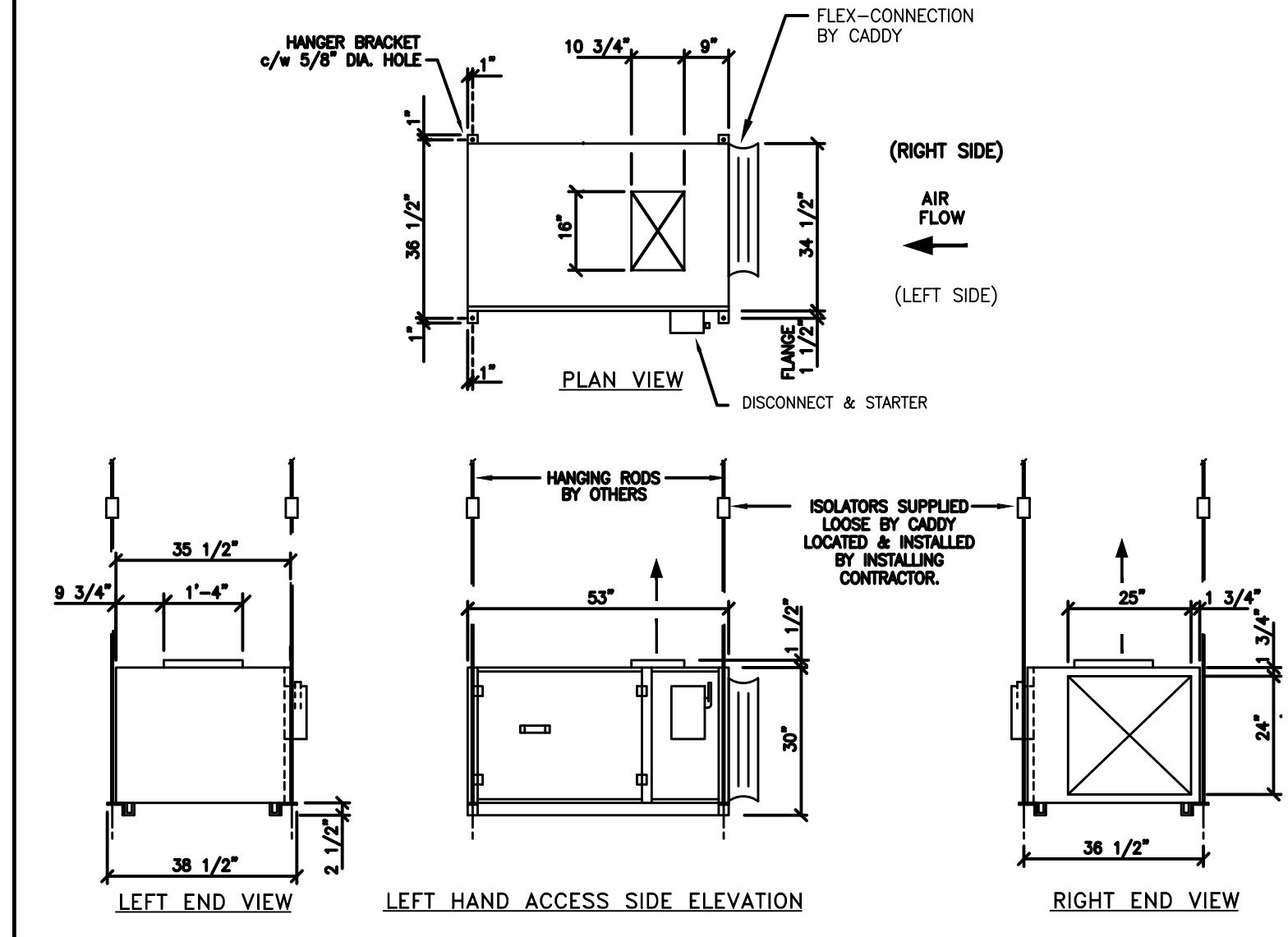
GENERAL: CABINETS ARE OF WELDED STEEL CONSTRUCTION, PRIMED AND PAINTED. ECOLOGY UNIT IS U.L. & U.L.C. LISTED.

INSTALLATION: THE EXHAUST DUCT CONNECTION AT THE ENTRANCE TO THE FILTER SECTION MUST BE CONTINUOUSLY WELDED. ALLOW MINIMUM 6" CLEARANCE ON ACCESS SIDE FOR FILTER REMOVAL AND FIELDS SERVING. EXHAUST DUCT WORK INSTALLED BETWEEN EXHAUST VENTILATOR AND ECOLOGY FILTER SECTION MUST CONFORM TO N.E.P.A. 96 ALL DUCT WORK BETWEEN EXHAUST VENTILATORS, ECOLOGY UNIT AND DOWNSTREAM FROM ECOLOGY UNIT SHALL BE SUPPLIED AND INSTALLED BY OTHERS. ALL DUCT CONNECTIONS TO THE UNITS MUST BE TRANSDUCED TO THE FULL OPENING AT THE UNIT INLET AND OUTLET. FILTERS MUST BE INSTALLED IN THE PROPER SEQUENCE AND PROPERLY SEATED AGAINST THE FILTER SUPPORT FRAME. A STRUCTURAL ENGINEER SHALL VERIFY THAT THE STRUCTURE WILL SUPPORT THE ADDITIONAL LOAD. ALL UNITS SHOULD BE PLUMB AND LEVEL. THE CONTROL PANEL IS WALL MOUNTED AT THE LOCATION SPECIFIED BY THE MECH. CONSULTANT. ELECTRICAL.

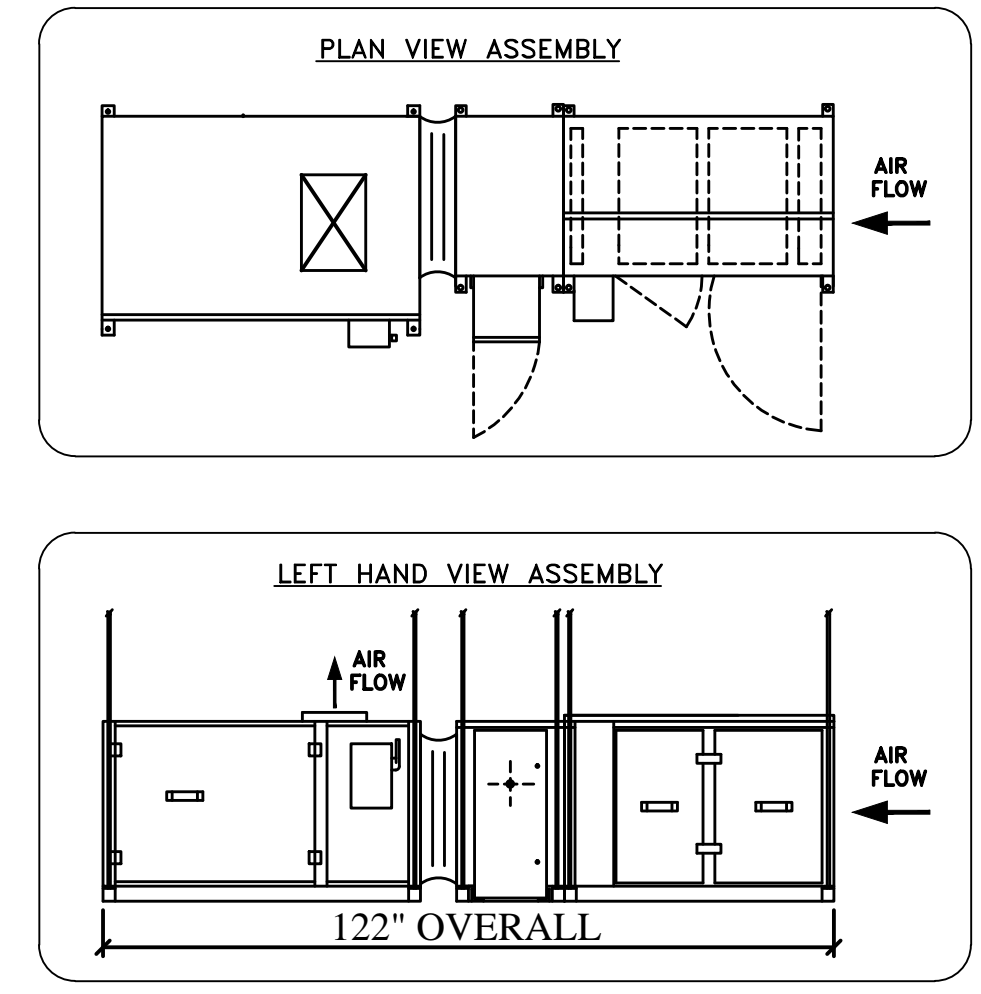
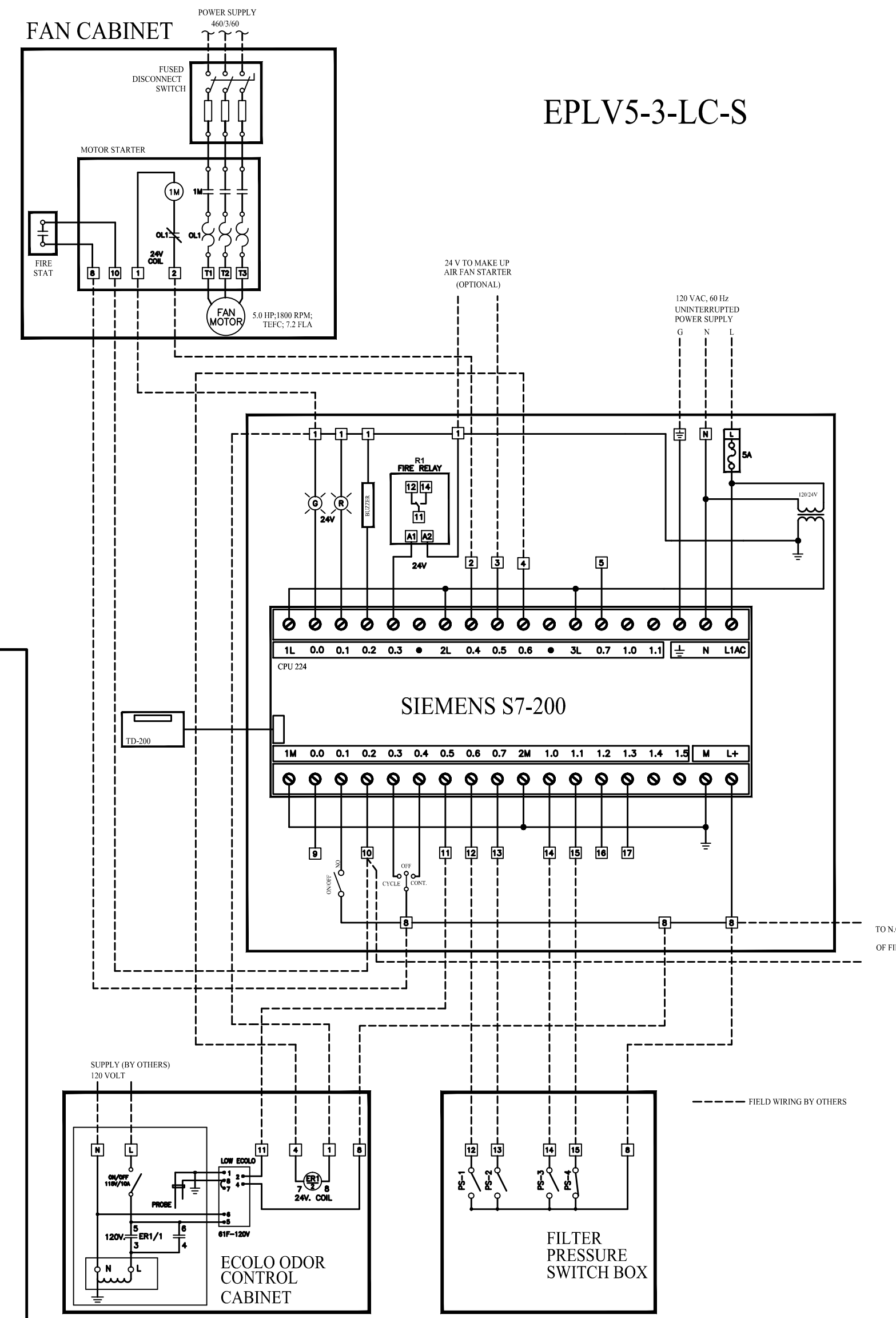
WIRE SIZES TO BE DETERMINED BY THE ELECTRICAL RATINGS ON THE UNIT RATING PLATE AND CONFORM TO ELECTRICAL STANDARDS INTERIOR SUSPENDED UNITS. SUSPENDED UNITS TO BE MOUNTED ON PLATFORMS OR SUSPENDED BY HANGING RODS FROM SUPPORT ANGLES WELDED TO THE ECOLOGY UNIT STRUCTURAL FRAME. PLATFORM AND HANGING RODS SUPPLIED AND INSTALLED BY OTHERS. SUSPENDED UNITS MUST BE PROVIDED WITH A SERVICE PLATFORM ALONG ENTIRE LENGTH OR UNIT BY OTHERS. THE PLATFORM SHOULD BE 30" WIDE TO ENSURE PROPER ACCESS TO ECOLOGY SYSTEM. SUSPENSION RODS MUST BE INSTALLED IN SUCH A WAY THAT THE ACCESS DOORS ARE NOT OBSTRUCTED AT ALL TIMES. ALLOW 6" CLEARANCE ABOVE FILTER SECTION FOR ACCESS TO PRESSURE SWITCH PORTS.

**CONFIRM SEQUENCE OF OPERATION.**

FAN SECTION FOR ECOLOGY UNIT: CAS2000 (EF2-45-OC2-B2)



WIRING DIAGRAM FOR ECOLOGY UNIT: CAS2000 (EF2-45-OC2-B2)



**(2) - REQUIRED**

(1) AP-1  
(1) AP-7

**REVISIONS**

REV	DATE	BY	REMARKS
A	4-26-06	SWL	(2) REQUIRED AND CHANGED C.F.M. AND S.P.
B	5-2-06	SWL	UPDATED CAS-KEF 2000 DETAIL
C	5-11-06	SWL	UPDATED CAS-KEF 2000 DETAIL

**CADDY AirSystems**  
509 SHARPTOWN ROAD  
P.O. BOX 345 BRIDGEPORT NJ 08014  
Tel: (856) 467-4222 Fax: (856) 467-5511

**EQUIPMENT SCHEDULE**

CAS-KEF-2000

CADDY NO. 3732 ITEM NO. AP-1, AP-7

JOB: STANFORD STADIUM  
LOC:  
CUST:  
CUST#:

DATE: 4-20-06 SCALE: N.T.S. SHEET 2 OF 2  
DR BY: SWL APP'D BY: DWG# D-1-3732

